

CLX-9201NA / CLX-9251NA / CLX-9301NA
A3 MultiXpress Color Laser Multifunction Printers

Office efficiency.
Now in a more efficient package.



Samsung CLX-9201NA / CLX-9251NA / CLX-9301NA A3 Color Laser MFPs



Getting even more productivity in a workday is the new status quo and Samsung offers more than one way to keep up. Introducing the Samsung CLX-9201NA, 9251NA, and 9301NA A3 color laser MFPs. Compact, powerful and simple to use, they provide the performance today's businesses need to realize an efficient output of documents and a more streamlined workflow.

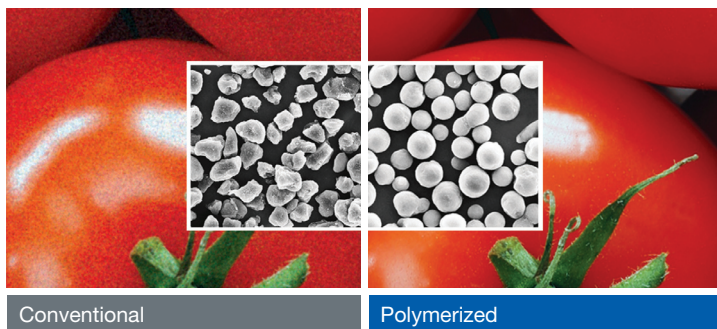
Powerful, Professional Performance

Samsung CLX-9201NA, 9251NA and 9301NA MFPs deliver advanced, powerful features to get more results out of your workday with a level of quality that will always represent your company with the highest degree of professionalism.



Exclusive Samsung Technology Delivers Sharp, Colorful Prints

Samsung's exclusive ReCP (Rendering Engine for Clean Page) technology automatically sharpens the focus of both graphics and text. Color is trapped precisely for professional results, and images are de-screened to look more natural and cleaner.



Superior, Polymerized Toner

Samsung's polymerized toner improves your output several ways. It features smaller and more uniform particles than conventional toner, for crisper lines and more vivid colors. It eliminates paper curling. Its higher wax content adds a rich glossiness to images, while preventing fading. Lower fusing temperature saves energy and wear.



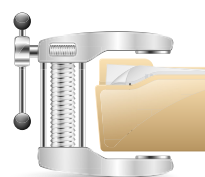
XOA (Open Architecture Platform)

The Samsung CLX-9201NA, 9251NA and 9301NA MFPs connect to your line-of-business applications through the unique Open Architecture Platform (XOA). Based on open standards, XOA allows third-party vendors to create embedded applications that multiply the MFP's capabilities, in order to improve business processes.



Powerful Processing

Office productivity increases dramatically with fast printing and scanning capabilities. A fully integrated 1GHz Dual Core processor handles large print and copy jobs faster, as well as scan throughput. In fact, every task is completed up to 1.5 times quicker, so you can spend more time producing and less time waiting.



High File Compression

Samsung's MRC (Mixed Raster Content) technology compresses scanned file sizes significantly with no reduction in quality. You can save storage space and working time, and more easily send scanned files.

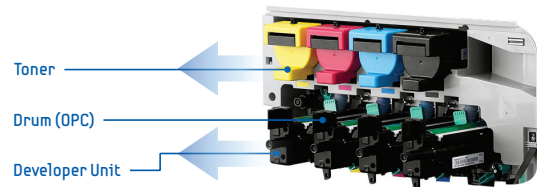
Versatile, Flexible, Easy to Use

The more your MFP allows you to do, the more valuable it is. Samsung CLX-9201NA, 9251NA and 9301NA MFPs are simple and versatile, for efficient and flexible workflow.



Quick and Easy Setup

Samsung CLX-9201NA, 9251NA and 9301NA MFPs install easily and get to work quickly. Setup is simple and fast with everything you need, including a pre-installed DADF (Duplex Automatic Document Feeder).



Make the Most of your Floor Space

The compact, streamlined designs of the MFPs mean they'll occupy very little floor space. The space-saving 350-sheet inner finisher and internal card reader add utility without adding size.

Cost Saving, Hassle-Free Ownership

Control costs with separate toners and OPC drums. You don't have to change both when only one part wears out. Additionally, the OPC drums are interchangeable for each color, so you can keep a smaller inventory on hand. The Developer unit provides a yield of 300,000 pages*, for even further reduced maintenance.

*Declared cartridge yield value in accordance with ISO/IEC targets.



Easy Mobile Print App



Print from your mobile devices directly to the MFPs with the free Samsung Mobile Print App. Just connect wirelessly and print, without the need to install any print drivers.



Samsung Easy Mobile Print App earned the 2012 Outstanding Achievement Award from Buyers Lab, Inc.

Intuitive 7" Color Touch Screen

Get started quickly with an intuitive user interface. The large, easy-to-read color touch screen guides users with smooth scrolling. Even first-time users can manage complex jobs quickly and easily.

- **User Menu Customization** (Up to 40 Shortcut Icons)
Save time with jobs you do regularly.
- **Smart Search** Find specific functions quickly by typing in the keyword.
- **Quick Copy Access** all copy functions at a glance.

Samsung MPS, Mobile, Security and Productivity Solutions

Samsung offers intelligent in-house and partner solutions that increase office productivity.

Document Management/Workflow	Managed Print Services	Job Accounting/Pull Printing	Device Management
<ul style="list-style-type: none"> • SmarThru (Workflow)* • PerceptiveΔ*** • DPD - GoldFaxΔ • DriveΔ • PrismΔ • IntellineticsΔ • MaxxVaultΔ*** 	<ul style="list-style-type: none"> • PrintFleet • MWaiΔ • Compass • GreatAmerica • Leasing • LMI 	<ul style="list-style-type: none"> • PharosΔ • EquitracΔ • Jetmobile • Genius BytesΔ • SafeComΔ • PaperCutΔ • OCMΔ • BitsΔ • Vendapin • EFI 	<ul style="list-style-type: none"> • SyncThru 6* (Web Services) • SyncThru* (Web Admin)

* Samsung in-house solutions. ** Available end of 2012. Δ XOA Solution.

Controlling Costs, Controlling Security

The success of your business is an all-encompassing priority for Samsung. We create ways for you to work more efficiently, to save resources and money. And we create ways for you to work securely to protect your information and your ideas.



Efficiency that Saves Money and Resources

Save paper and energy with the CLX-9201NA, 9251NA and 9301NA MFP's ECO button. With a single touch, you can print more images on every page, including 2-up, 4-up and duplex printing, to save paper. You can save paper with automatic blank pages skipping. And the Easy Eco Driver allows you to preview your document before printing, reducing wasted printouts and saving you even more paper and toner.

Monitor your Usage

With Single Sign On, a user logs in once to access all Samsung solutions. With Samsung SyncThru™ Admin, IT can easily monitor and manage usage.



A Secure Office

To ensure data security, the Samsung Security Framework is standard. It provides a secure network that helps prevent unauthorized access to confidential information.

- Common Access Card (CAC)*
- Common Criteria*
- SecurThru*
- RF IDEas



Samsung Eco-Driver earned the 2012 Outstanding Achievement Award from Buyers Lab, Inc.

Configurations & Options

DADF (Standard)

- Duplex Automatic Document Feeder
- 100 sheet capacity
- 2-sided document scanning
- Paper empty / width / length detect

Inner Finisher

- 350 sheet capacity
- Corner stapling up to 50 sheets

Job Separator

- Ext. output stacker
- 125 sheet capacity

Dual Cassette Feeder

- 1,040 sheet capacity
- Paper empty / size detect

Stand

- Cabinet stand

7" Color Touch-panel LCD

- Touch panel UI

Working Table

Embedded Card Reader Holder

(Service part)

Fax Kit

- ITU-T G3, Super G3



Specifications		CLX-9201NA	CLX-9251NA	CLX-9301NA
Print				
Engine Speed	Simplex	Mono and Color: Up to 20 ppm in A4/Letter		Mono and Color: Up to 25 ppm in A4/Letter
First Page Out Time (B&W and Color)	From Ready	12 sec. (Color)/10 sec. (Mono)		11.5 sec. (Color)/9.5 sec. (Mono)
Resolution	Optical	600 x 600 dpi		
Resolution	Enhanced	Normal: 2400 x 600 dpi Effective Output (600 x 600 x 2 bit), Best: 9600 x 600 dpi Effective Output (600 x 600 x 4 bit), High Quality: Real 1200 x 1200 dpi		
Printer Languages		PCL5C, PCL6 (XL), PostScript Level3, PDF 1.7+, XPS		
Fonts/Downloadable Fonts		PCL: 93 scalable, 1 bitmap, OCR-A, OCR-B, PS:136 / Yes (PCL & PS3 S/W Font)		
Controller and Software				
Processor (CPU)		Chorus4N Dual Core 1GHz		
DRAM	Standard/Max	1GB DDR3 SDRAM		
Storage		320GB HDD Standard (Usable Space [Document Box Space]: 88GB)		
Printer Driver	(Supporting OS)	Windows®: 2000/XP (32/64bit)/2003 (32/64bit)/Vista (32/64bit)/2008/Win7/2008 R2 (64 only), Linux: Redhat Enterprise Linux WS 4, 5 (32/64bit)/Fedora 5, 6, 7, 8, 9, 10, 11, 12, 13 (32/64bit)/SuSE Linux 10.1 (32bit) OpenSuSE 10.2, 10.3, 11.0, 11.1, 11.2 (32/64bit)/Mandriva 2007, 2008, 2009, 2009.1, 2010 (32/64bit)/Ubuntu 6.06, 6.10, 7.04, 7.10, 8.04 8.10, 9.04, 9.10, 10.04 (32/64bit)/SuSE Linux Enterprise Desktop 10, 11 (32/64bit)/Debian 4.0, 5.0 (32/64bit), Mac: OS X 10.5 – 10.7		
Interface				
USB	Host	High-Speed USB 2.0 Host (2-port)		
USB	Device	High-Speed USB 2.0 Peripheral (1-port)		
Wired LAN		Ethernet 10/100/1000 Base TX		
Foreign Device Interface		Optional (CLX-KIT10F)		
Network Interface				
Windows / Mac / Linux / Novell / Others		Microsoft® Windows® 2000, XP (32/64bit), 2003 (32/64bit), Vista (32/64bit), Win7 / OS 10.5 – 10.6 / Redhat 8 – 9, Fedora Core 1–4, Mandrake 9.2 – 10.1, SuSE 8.2 – 9.2, Netware 5.x, 6.x (TCP/IP Only), Unix (HP-UX, Solaris, SunOS, SCO)		
NW Protocols	TCP/IP	TCP/IPv4, HTTP, SNMPv1/v2c/v3, LDAP, SMTP, SSL/TLS, IPsec, DNS, WINS, SLP, Bonjour, SSDP, DDNS, DHCP/BOOTP, IPv6		
	NetBIOS over TCP/IP	Yes		
	Others	HTTPS, LDAPS, IPsec		
IP Addressing		Static IP, Auto IP, BOOTP, DHCP		
User Interface				
Display	LCD	7" 800 x 480 WVGA TFT Color Graphic LCD with Touch-Screen, 24-bit color		
Key/Button		Power, Start, Stop, Interrupt, Numeric Keypad, Reset, Counter, Job Status, ECO, Logout, Clear, On Hook Dial, Redial/Pause		
Scan	Scan Method	Color CCDM-MMT		
	Compatibility	TWAIN (N/W)		
	Resolution	Optical: 600 x 600 ppi, Enhanced: 4,800 x 4,800 ppi		
	Halftone	256 levels		
	Zoom Range	25% – 400% in 1% increments (Platen/DADF)		
	Multi Copy	1–9999		
Scan-to	HDD	Yes (Shared Folder)		
	USB	Yes		
	Email	Yes		
	Client (NetScan)	Yes (N/W)		
	SMB	Yes		
	FTP	Yes		
Fax	Compatibility	ITU-T G3, Super G3		
	Modem Speed	33.6 Kbps		
	Compression	MH/MR/MMR/JBIG		
	S. Fine (Super Fine)	300 x 300 dpi		
	Speed Dial	500 locations		
	Group Dial	Max. 500 Groups (Max. locations per 1 Group: 100 locations)		
Paper Handling	Multi-Send	Up to 505 locations		
	Standard Capacity	1,140 sheets, 520-sheet cassette tray x 2, 100-sheet MP tray		
	Max. Input Capacity	MP + 4 Tray: 2,180 sheets		
Multi-Purpose Tray				
Capacity		Plain Paper: 100 sheets @ 80 gsm, Envelopes: 10 sheets @ 75 gsm, Labels: 20 sheets @ 120 – 159 gsm, Thick Paper: 10 sheets @ 176 gsm		
Media Sizes		98 x 148 mm – 297 x 432 mm (3.87 x 5.8" – 11.7 x 17")		
Media Type		Printer Default, Plain, Thick, Thin, Bond, Color, Cardstock, Labels, Envelope, Preprinted, Letterhead, Recycled, Cotton, Archive, Glossy		
Media Weight		16 – 46 lb. (60 to 175): Simplex, Duplex		
Sensing		H/W Install Detect, Paper Empty and Low Level Detect, Paper Size Detect		
Standard Cassette Tray				
Capacity		520 sheets @ 20 lb. (80 g/m²) x 2		
Media Sizes		Ledger, A3, Letter, Legal, Oficio, Folio, A3, A4, JIS B5, ISO B5, Executive, A5, Statement, Custom		
Media Type		Plain, Thin, Bond, Punched, Pre-Printed, Recycled, Label, Cardstock, Letterhead, Thick, Cotton, Colored, Archive, Glossy		
Media Weight		16 lb. Bond to 120 lb. Index		
Dual Cassette Feeder				
Capacity		520 sheets @ 20 lb. (80 g/m²) x 2		
Media Sizes		Ledger, A3, Letter, Legal, Oficio, Folio, A4, JIS B5, ISO B5, Executive, A5, Statement, Custom		
Media Type		Plain, Thin, Bond, Punched, Pre-Printed, Recycled, Label, Cardstock, Letterhead, Thick, Cotton, Colored, Archive, Glossy		
Media Weight		16 lb. Bond to 120 lb. Index		
Automatic Duplex				
Supporting		Yes		
DADF				
Capacity		100 sheets (21 lb., 80 g/m²)		
Document Size		Width: 140 – 297mm, Length: 140 – 432mm		
Consumables				
CRU		Yellow Toner: CLT-Y809S, Magenta Toner: CLT-M809S, Cyan Toner: CLT-C809S, Black Toner: CLT-K809S, Imaging Unit Kit: CLT-R809, Waste Toner Box: CLT-W809		
Toner (Polymerized)	Black / Color	20,000 impressions @ 5% Mono Chart / 15,000 impressions @ 5% Color Chart		
Environment				
		AC 110 – 127V (-10%–6%)		
Dimensions		22.05" (W) x 24" (D) x 33.24" (H) (Includes Standard Document Feeder)		
Weight		160 lbs. (With Standard Document Feeder)		
Options				
Dual Cassette Feeder / Inner Finisher		CLX-PP100 / CLX-FIN50S (50-Sheet Inner Finisher)		
Job Separator Tray / Fax Kit / Cabinet Stand / FDI Kit / Working Table / Staples		SCX-CLX-JST100 (Job Separator) / SCX-CLX-FAX160 / CLX-DSK20T / CLX-KIT10F / CLX-WKT001 / SCX-STP000		

Contact: www.digitalrevelation.co.za
info@digitalrevelation.co.za
021-551 1206

samsung.com/printer

 Follow us on Twitter@SamsungBizUSA

Product Support: 1-866-SAM4BIZ | 1-800-SAMSUNG



©2012 Samsung Electronics America, Inc. Samsung is a registered mark of Samsung Electronics Corp., Ltd. Specifications and designs are subject to change without notice. Print speed will be affected by operating system used, computing performance, application software, connection method, media type, media size and job complexity. Copy speed is based on Single Document Multiple Copy. Non-metric weights and measurements are approximate. All brand, product, service names and logos are trademarks and/or registered trademarks of their respective manufacturers and companies. Simulated screen images. See samsung.com for detailed information. Printed in USA on 50% recycled (30% post-consumer waste) paper using soy inks. PNT-CLX9201NACLX9301NA-SEP12T

